



### **AFIRE Fireplaces: because your fireplace is unique!**

Fireplaces give the home a soul, a touch of “well-being”. The fire is an invitation to dream. In front of the hearth, the spirit awakens, wanders, remembers... The fire gives us a future, a consciousness. An important fact is that nowadays the art of fire has been lost in the midst of urban life with its excessive demands.... With AFIRE you will rediscover the fireplace.

In fact, installing a chimney flue is the most challenging action when carrying out interventions of this kind. This operation can at times prove impossible or in any case extremely difficult, disruptive and expensive and can often result in abandoning the installation of your hearth.

AFIRE offers you the opportunity to create your design fireplace in a very simple manner. Modern hearths with real flames that can be installed very quickly, in the city as well as in the countryside, in a house, in an apartment or at commercial premises. An eco-friendly vent-free fireplace which is easy-to-install and easy-to-use. A device for everyday use, simply by pressing a remote control button.



## How to install your design fireplace?

### 1. Remote Controlled Ethanol Burners (page 4-8)

There is nothing easier than creating YOUR design hearth with installation of an electronic bio ethanol burner insert in your existing space or in the space to be created according to your tastes and preferences in terms of decor.



2

### 2. Remote Controlled Ethanol Fireplaces (page 9 -13)

And for those seeking to implement a remote controlled vent free hearth without any installation, AFIRE offers a range of automatic ethanol fireplaces fitted with electronic ignition and safety detectors.



## Technical Data



### *Controls*

Remote control, On/off button

Dry contact for home automation applications and remote control via Smartphone or remote commands



### *Ignition - Power*

Automatic and secured ignition through low-voltage electronic induction electrodes

Feed pumps with high-tech membranes developed by the medical field



### *Security*

Electronic sensors that automatically halt the unit in case of malfunction (CO<sup>2</sup>, heat, levels, tank gauge, accelerometer, etc.)



### *Standards*

All AFIRE devices comply with the following safety standards:

CE (Europe), FCC (USA), IC (Canada)



## 1. Automatic Bio Ethanol Burner Inserts



4

### BL Premium range 40 – 100 cm, 15 – 40 in width (BL40, BL66, BL100)

The fireplace hearth BL range is fire in its purest state, domesticated by AFIRE. Brushed stainless steel blocks of combustion line which can be embedded easily and quickly.

#### BL 40 Compact ethanol burner

Dimensions: 40,5 / 24 / 11,3 cm (15,94 / 9,45 / 4,45 in)  
 Output: 2 700 W (9 000 BTU)  
 Capacity of the tank: 2,25 L (0,6 Gal)  
 Consumption: 0,4 liter/hour (0,11 Gal/hour)  
 Weight: 8,5 kg (18,74 Lbs.)



#### BL 66 Large ethanol burner

Dimensions: 66,5 / 24 / 11,3 cm (26,18 / 9,45 / 4,45 in)  
 Output: 3 750 W (13 000 BTU)  
 Capacity of the tank: 4 L (1,06 Gal)  
 Consumption: 0,60 liter/hour (0,16 Gal/hour)  
 Weight: 14 kg (30,86 Lbs.)



#### BL100 Extra-large "PREMIUM" ethanol burner

Dimensions: 100 / 24 / 12,3 cm (39,37 / 9,45 / 4,84 in)  
 Output: 6 200 W (21 000 BTU)  
 Capacity of the tank: 5 L (1,32 Gal)  
 Consumption: 1 liter/hour (0,26 Gal/hour)  
 Weight: 20 kg (44,09 Lbs.)







### BX XL Ethanol Burner Inserts: 120 – 180 cm, 50 – 70 in width (BX120, BX150, BX 180)

AFIRE, with its extra-large bioethanol burner inserts BX range, offers the possibility of creating exceptional hearths with total control of the art of fire. Light-up your dreams!

#### **BX120 XL intelligent automatic ethanol burner**

Dimensions: 120 / 24 / 21,3 cm (47,24 / 9,39 / 8,38 in)  
Output: 7 500 W (25 500 BTU)  
Capacity of the tank: 12 L (3,16Gal)  
Consumption: 1,2 liter/hour (0,32 Gal/hour)  
Weight: 34 kg (66 Lbs.)



#### **BX150 XL intelligent automatic ethanol burner**

Dimensions: 150 / 24 / 21,3 cm (59,06 / 9,39 / 8,38 in)  
Output: 10 000 W (34 000 BTU)  
Capacity of the tank: 15 L (4 Gal)  
Consumption: 1,65 liter/hour (0,44 Gal/hour)  
Weight: 38 kg (75 Lbs.)



#### **BX180 XXL intelligent automatic ethanol burner**

Dimensions: 182 / 24 / 21,3 cm (71,65 / 9,39 / 8,38 in)  
Output: 12 400 W (42 000 BTU)  
Capacity of the tank: 18 L (4,75 Gal)  
Consumption: 2 liters/hour (0,53 Gal/hour)  
Weight: 42 kg (94 Lbs.)



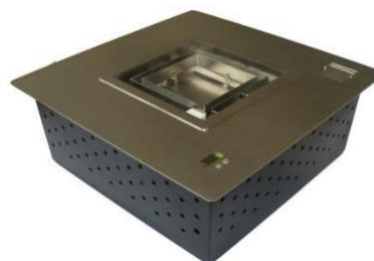


### BC : Designer Hearths & Burner Inserts AFIRE BC Range (BC50, BR72)

Square and round ethanol burner inserts, a new designer tool... You can now imagine new fireplaces and hearths in different shapes, round fireplace, square fireplace... everything is allowed!

#### BC50 Square ethanol burner

Dimensions: 50 / 50 / 21,3 cm (19,69 / 19,69 / 8,39 in)  
Output: 8 100 W (27 000 BTU)  
Consumption: 1,3 L/h (0,34 Gal/h)  
Weight: 19kg (42 Lbs).  
Tank capacity: 12 L (3,16 Gallons)



#### BR72 Bruleur Ethanol Rond

Dimensions: Ø/H 72 / 21,3 cm (28,35 / 8,39 in)  
Output: 8 100 W (27 000 BTU)  
Consumption: 1,3 L/h (0,34 Gal/h)  
Weight: 28kg (62 Lbs).  
Tank capacity: 12 L (3,16 Gallons)





### ADD Collection: Ethanol Burners for Existing Fireplace

#### ADD Ethanol burner for fireplace : 2 models

**ADD -M** Dimensions: L/D/H (cm) 59 / 29,7 / 21,5

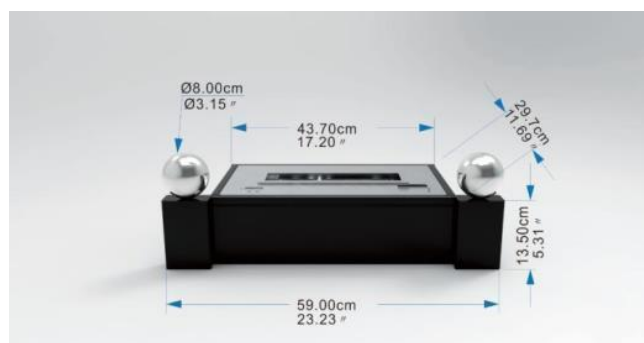
Inches: 23,23 / 11,69 / 8,46

Output: 2 700 W (9 000 BTU)

Capacity of the tank: 2,25 L (0,6 Gal)

Consumption: 0,4 liter/hour (0,11 Gal/hour)

Weight: 15 kg (33,10 Lbs.)



**ADD -L** Dimensions: L/D/H (cm) 85 / 29,7 / 21,5

Inches: 33,46 / 11,65 / 8,46

Output: 3 750 W (13 000 BTU)

Capacity of the tank: 4 L (1,06 Gal)

Consumption: 0,60 liter/hour (0,16 Gal/hour)

Weight: 22 kg (48,50 Lbs.)



#### Colors

Body : Black or White

Burner : Stainless Steel or Black

Balls : White – Black – Stainless Steel - Gold





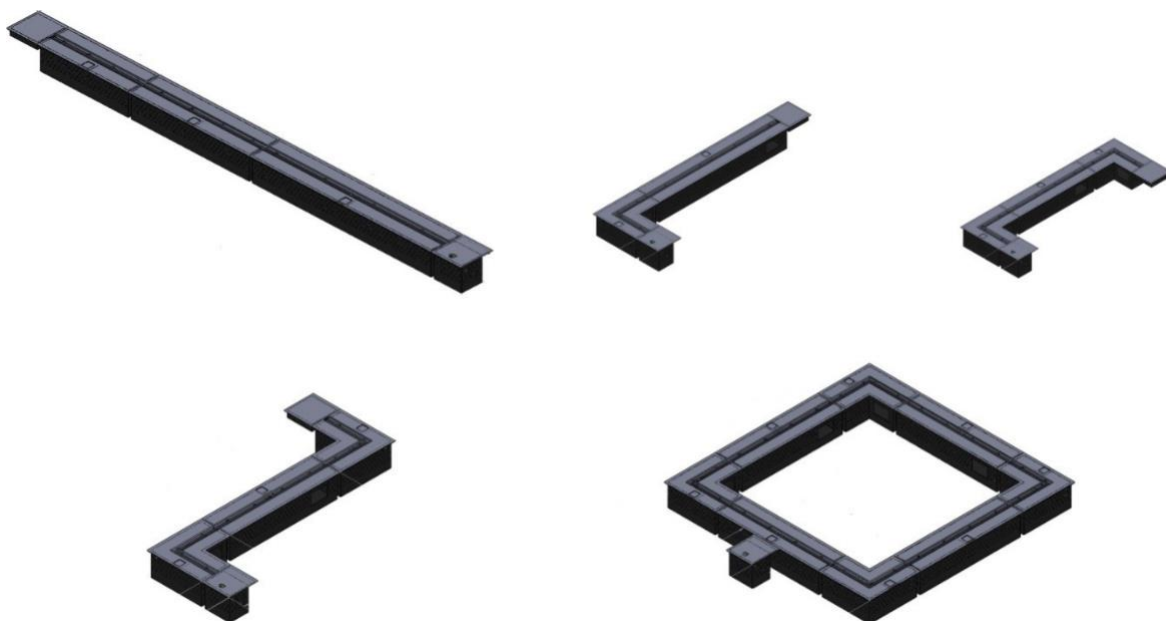


### Modulo Fire Ribbons

#### Starting from 200 cm (80 in.) and Angle Ethanol Burners

Home fashion comes from designers, architects, decorators and building professionals. AFIRE has created a line of modular remote-controlled bioethanol burners just for them. These inserts require no major construction work, and especially, no installation of a chimney or evacuation vent.

It is therefore possible to build a continuous ribbon of fire by assembling several of these modules to create the most varied, trendiest forms you can think of or might need. This is a true fire-tool that helps you to create personalized fireplaces in an unusual design. Luxury, refinement and extravagance: go all out!



Very large-sized ribbons of fire, lines, L-shapes, squares, rectangles, etc. Shapes and sizes are unlimited.



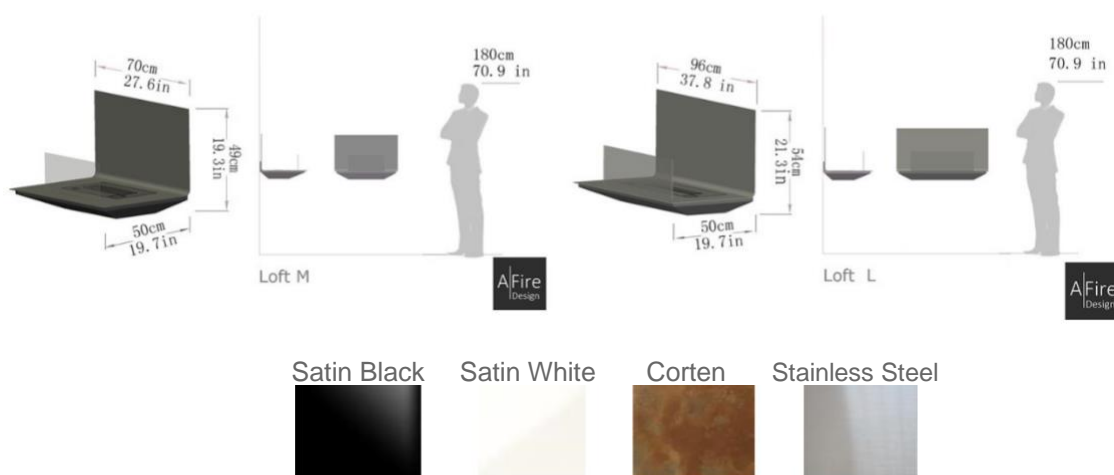
## Fireplaces 2. Remote Controlled Intelligent Fireplaces



9

Never has an Ethanol Bio Fireplace been more Flexible and  
Design **LOFT Collection**

Dimensions, colors, models (LOFT M & LOFT L): 24 installation possibilities



The same Loft bio fireplace model can be installed in different ways:

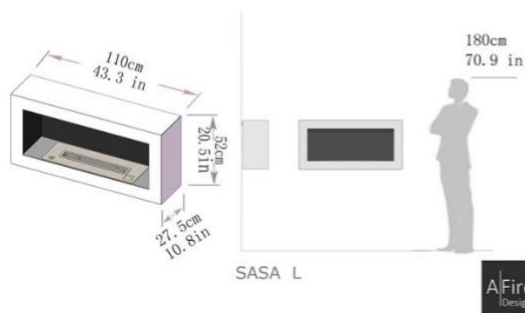
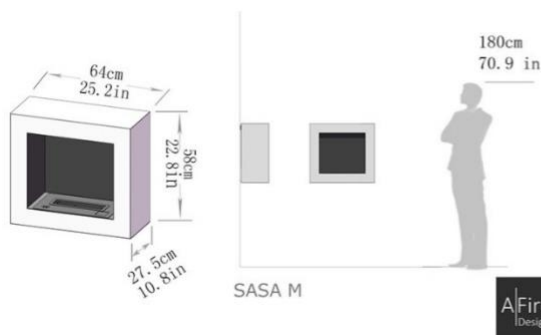




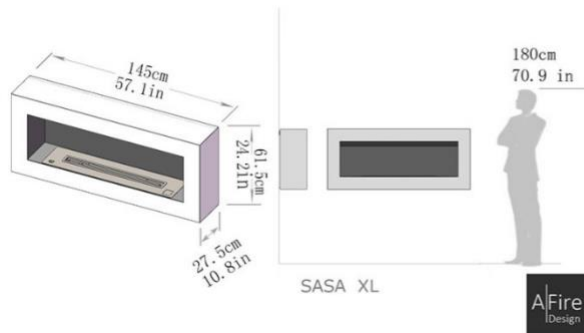
## Bio Ethanol Wall Fireplace with Timeless Design

### SASA Collection

Dimensions, colors, models



## Remote Controlled Intelligent Ethanol Burners & Fireplaces



11

Satin Black



Satin White



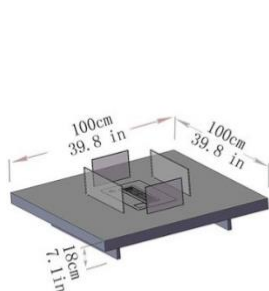
Corten



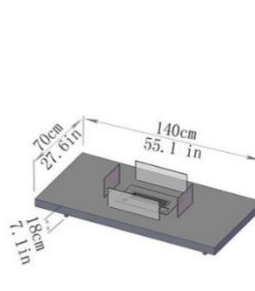




Coffee Table with Integrated Automatic Ethanol Burner Insert  
**LOU Collection**  
Dimensions, colors, models



LOU square



LOU rectangular

Glossy Black

Glossy White

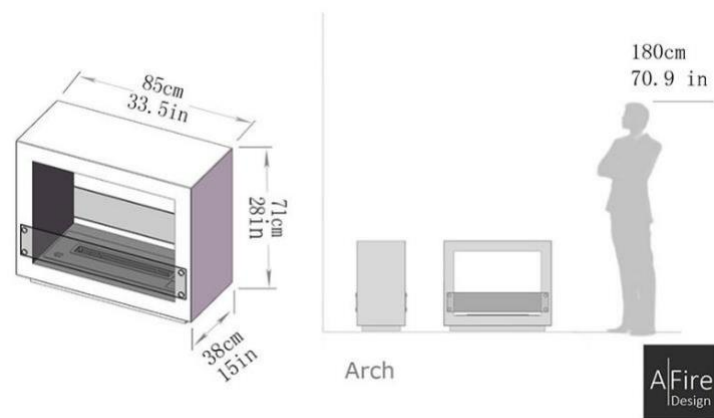
Corten

Natural Wood





Ecological & Design Free Standing Fireplace  
**ARCH Collection**  
Dimensions, colors, models



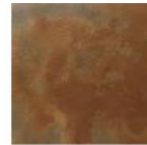
Satin Black



Satin White



Corten







### **AFIRE Intelligent Burners & fireplaces manufacturer**

#### **Bioethanol burners & Fireplaces manufacturer Better A FIRE manufacturer**

A-FIRE manufacturer invent a new discipline, a new art-of fire where art design and technology, intersect, in order to offer you truly new fire-spaces. Research and development, production, quality control, everything is made in our premises. A manufacturing of fireplaces and bioethanol burners between craft and industry, a “know-how” dedicated to the safety and design down to the last detail.

#### **To invent the universe of the fire is designers’ business**

With the arrival of the new constraint-free and flueless inserts to embed, the creators discover infinite possibilities of designs with the fire. The fireplace is not any more an object of decoration, a vestige of the past, but indeed a functional design fireplace which is going to take new forms to merge, to sublimate or to be the essential element of a living area

