



W53/50R DESIGNER FIREPLACE

---

**FIRE IN ITS  
PUREST  
FORM**



**Experience** of something exceptional is one of the main reasons to choose a fireplace. A natural fireplace is the ultimate way to fill a space with peace, calm, and serenity.




**Individuality** means having the widest choice and the most design freedom possible. A fireplace always has a prominent place in a room, so it needs to be perfectly aligned with your customers' individual tastes. There is no need to compromise.



**Durability and sustainability** go without saying. Our wood fireplaces are equipped with innovative combustion technology, making them not only durable but also environmentally friendly and efficient.



W53/50R design fireplace - design rear panels - 7 cm/8 mm mounting trim



# A WORD FROM THE DESIGNERS

The W53/50R is a robust and elegant design fire that is suitable for all types of homes thanks to its flexibility in terms of design. This truly is a world-class wood fireplace.

*- Louis Hegemann, Design & Innovation at Kalfire*

I am proud to present an unrivalled wood fireplace: the Kalfire W53/50R – a unique, innovative design fireplace made of robust materials. As a designer, I have to accommodate a range of different customer requirements. However, our motto is that every vision can be made a reality, even if that seems impossible. We have created a fireplace that enables you to experience fire in its purest form in your living room.

The result is the Kalfire W53/50R: a combination of ambience, design, and efficiency. The 'W' stands for Wood, '53' for its depth, '50' for its height, and the 'R' for 'Room divider'. The glass door of our new wood fireplace is completely frameless and one of a kind in the market. Although this is not the first three-sided fireplace we have created, it is the first in this unique style!

We have always been a leader in design and sustainability, and the W53/50R is even one of the most environmentally friendly wood fireplaces in the world. At Kalfire, we don't compromise: everything at Kalfire is about quality. We aim to achieve the highest possible level when it comes to sustainability, design, ambience, and convenience.



## EXPERIENCE

### Back to the core

It is part of human nature to make fire and gather around it. We have been making fire since the days of early humans, and it holds an enduring allure. It is something that unites us; it is embedded in our DNA.

The advanced Kalfire W53/50R shows what a wood fireplace really is all about. High-quality technologies and robust, pure materials ensure that you can enjoy fire in its purest and fullest form.

### The best experience in every space

This durable, three-sided wood fireplace boasts an innovative, advanced design and creates a warm ambience in your home. The fire is perfectly visible from all sides, so you can enjoy the relaxing sight of the flickering flames in every space.



### The perfect ambience

The compact Kalfire W53/50R gives you the experience of a fireplace without compromising on safety. The three-sided, curved ceramic glass offers a full view of the fire. You also have maximum control over the flames: the seamless sliding door and smart air control with automated air supply enable you to easily adjust the size of the fire to reflect the ambience you want to create.

# DON'T COMPROMISE

This wood fireplace is for those who refuse to compromise, but listen to their feelings.



## DESIGN

### **Robust, sleek look**

The Kalfire W53/50R gives both a robust and sleek look to your home and is the perfect match for spacious interiors. Thanks to its shape, the fireplace also makes a fantastic room divider.

### **Turning your vision into a reality**

The Kalfire W53/50R is a stand-out product in its category thanks to the many built-in options: it can function as a stylish room divider or as an eye-catching interior design piece in the three-sided model. You can choose from several mounting trims and three different rear panels to ensure that the fireplace is wholly aligned with the interior you envision.





## EFFICIENCY

### Less wood, more fire

The Kalfire W53/50R is one of the most environmentally friendly fireplaces in the world and is full of ingenious, sustainable technology. For example, the fireplace's perfect seal ensures maximum efficiency and optimal combustion, which is also cleaner. In addition, all Kalfire wood fireplaces are equipped with an intelligent regulator system and automated air supply, guaranteeing the cleanest possible combustion air. Combined with its airtightness, the fireplace's design also means wood consumption is kept to a minimum – more fire with less wood.





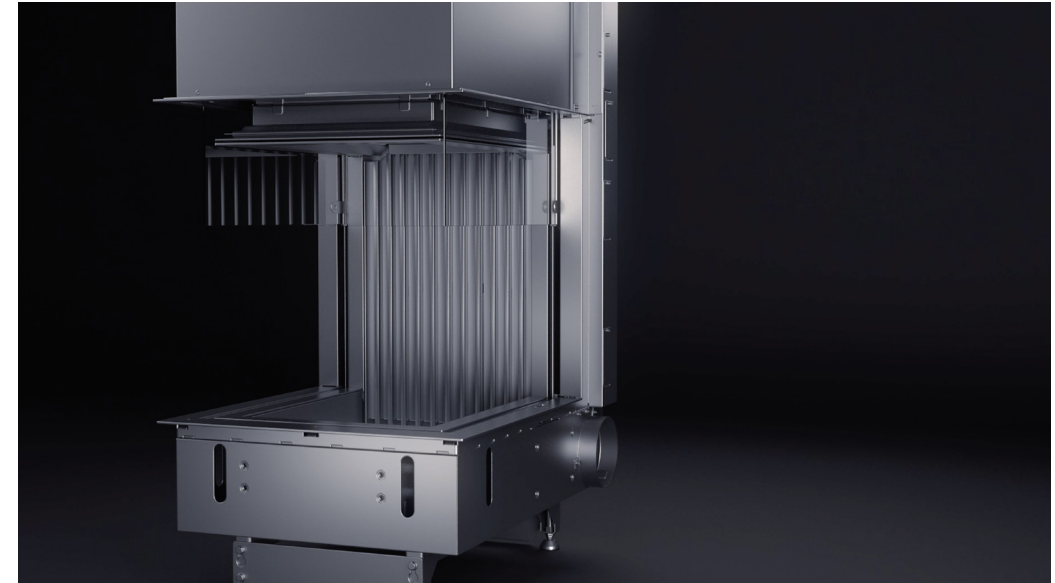
### Extremely easy cleaning

The Kalfire Easy Door System is an easy way of sliding out the Kalfire W53/50R's glass panel for cleaning. For added comfort and ease of use, the fireplace's glass panel is also free of metal corner strips. This prevents dirt from accumulating and guarantees extremely easy cleaning.

In addition to the unique Easy Door System, all Kalfire wood fireplaces are equipped with the unique Clean Window System. This system continuously blows a thin stream of air along the glass, so that it becomes less dirty and stays clean for a longer period.

### Warranty on top-quality products

Alongside ease of use, design, and environmental friendliness, Kalfire is committed to sustainability in the broadest sense of the word. Only the best is good enough. For example, we only use top-quality materials and techniques, and we also offer a five-year warranty on our products.





# A WORD FROM THE ARCHITECT

I'd rather create something beautiful for my customer, something that he or she can enjoy for the rest of her life. The Kalfire W53/50R adds this beauty to any interior. If my customer is happy, then I'm happy.

- Boudewijn Slings, Architect

20

Kalfire W53/50R

I have been working with Kalfire for almost 20 years as an architect; you could say that we have built up a warm bond. Kalfire often presents me with a design that would come into its own once it becomes part of an interior. That's where I come in. What I admire about Kalfire is that it is an exceptionally innovative company and is very open to thinking outside the box.

The W53/50 by Kalfire is a unique product in its category, but what I find so special about this fireplace is its shape: the W53/50R is the first wood fireplace in the market with such deep, 'frameless' sides. This is an important design feature, given that a fireplace is at the centre of a space. When you enter a room, the fireplace is the first thing you see. And Kalfire makes sure that what you see is beautiful.

The fireplace is extremely flexible in terms of its design, so it's fantastic to work with. And because the W53/50R is the same width as a cabinet, it's easy to install in any type of home. It's a compact fireplace that offers endless design possibilities. As a creative person, I thrive on this adaptability.

21

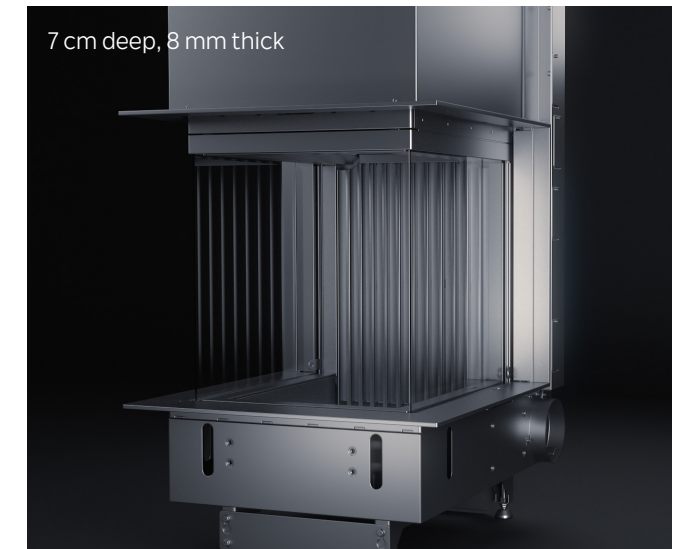
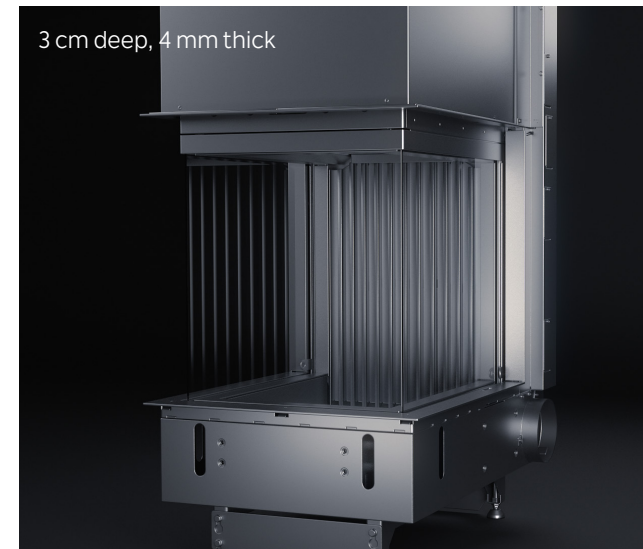
Kalfire W53/50R

## EVERYTHING ABOUT BUILT-IN DESIGN

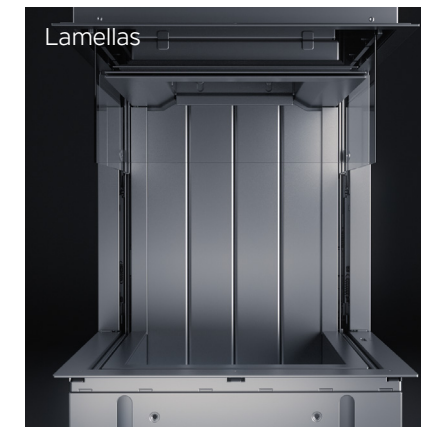
Kalfire offers a wide range of options that give your fireplace a personal touch. Come talk to a Kalfire dealer and look at which of the various options best match your vision, taste, and specific preferences. You can select the mounting trims, rear panels, and built-in design, so that you always have the fireplace that suits you best.

The frameless W53/50R is top of its class in design, offering a clear and safe view of the flames from all angles. The fireplace fits seamlessly into your interior, so you can sit back, relax, and enjoy fire in its purest form.

### Mounting trims



### Rear panels



# TECHNICAL SPECIFICATIONS

Kalfire W53/50R

**Type:** Wood fireplace

**Description:** closed, three-sided room divider with a glass sliding door system

## Rear panels

Skamol (firebrick)

Lamellas

Design

## Mounting trims

Standard trim: 3 cm deep, 4 mm thick

Optional trim: 7 cm deep, 8 mm thick

## Glass size

Width: 532 mm

Width of side glass: 480 mm

Height: 500 mm

## Sunken hearth

Length: 385 mm

Width: 465 mm

**Energy efficiency class:** A+

**Energy efficiency index:** 107 %

**Flue:** Ø 200 mm

**Weight of fireplace:** 327 kg

**Efficiency:** 80%

**Reduced capacity:** 6,5 kW

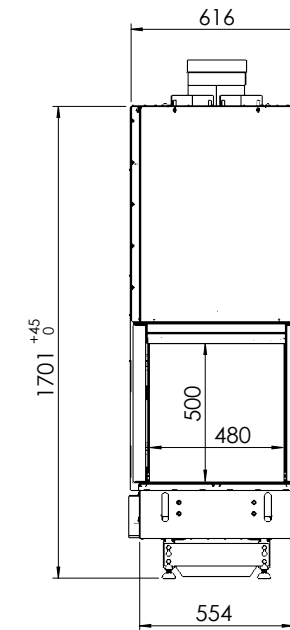
Kg of wood p/h at reduced capacity: 1,75 kg

**Nameplate capacity:** 13 kW

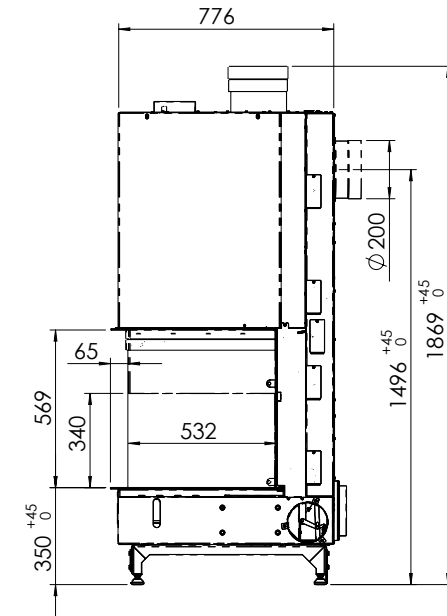
Kg of wood p/h at nameplate capacity: 3,5 kg

**Minimum supply of fresh air:** 1 x Ø 180 mm

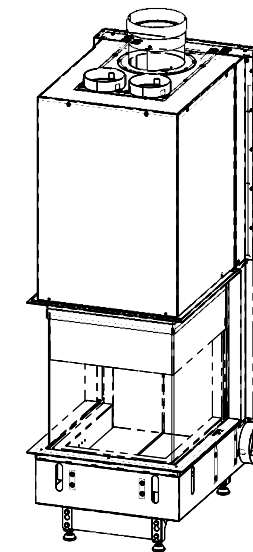
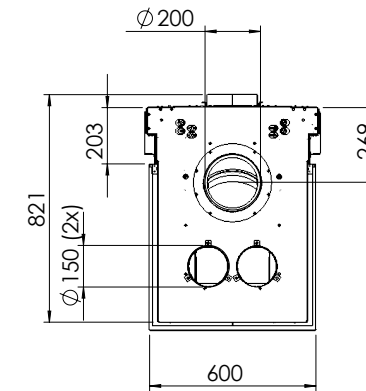
Front



Side view



Top



**KALFIRE**  
FIREPLACES

Geloërveldweg 21  
5951 DH Belfeld, NL

info@kalfire.com  
**W53-50R.KALFIRE.COM**

DON'T COMPROMISE.

